

Laurin & Klement Kampus: Construction of Škoda Auto's new headquarters completed

- › **State-of-the-art facility accommodates up to 2,000 employees, consolidating previously dispersed departments**
- › **Contemporary office design promotes interdepartmental collaboration and networking, enhancing the work environment**
- › **Building sets new standards in sustainability, expected to receive gold certification from German Sustainable Building Council and incorporating energy-saving technologies**

Mladá Boleslav, 4 March 2024 – After laying the foundation stone in May 2022, Škoda Auto is pleased to announce the completion of its new headquarters in Mladá Boleslav, the Laurin & Klement Kampus (LKK). The first employees of the Czech automaker will begin working at the state-of-the-art facility this month. The new building complex is designed to foster interdepartmental collaboration and uphold the highest standards of sustainability.

Karsten Schnake, Škoda Auto Board Member for Procurement, said: "With our new headquarters, we are stating our clear commitment to both our location in Mladá Boleslav and our heritage. We made a conscious decision to name the new building complex after our company's visionary founders – Václav Laurin and Václav Klement. This building is designed to foster interaction, discussion, and inspiration – a place where ideas are conceived, innovations nurtured, and teams strengthened. At the same time, the buildings reflect Škoda Auto's values, incorporating cutting-edge technology and focusing on our ambitious sustainability goals."

Meno Requardt, CEO of Volkswagen Immobilien, explained: "As the builder of and investor in Škoda Auto's new corporate headquarters, we take great pride in presenting this innovative campus building to our Czech colleagues. I would like to express my sincere thanks for the trust placed in us and the excellent cooperation with the Škoda team throughout the entire project. As a real estate partner for the Volkswagen Group brands, we are deeply committed to sustainable construction, aiming to make a tangible contribution to achieving climate protection goals with our buildings."

State-of-the-art working environment for up to 2,000 employees

Built within a two-year timeframe, the interconnected complex consists of four buildings. It will enable synergies to be efficiently tapped and promote direct interactions across various departments and units. The five-storey Laurin & Klement Kampus will bring together up to

2,000 employees previously working across around 20 buildings in Mladá Boleslav and Prague.

Additionally, the complex includes a modular conference area equipped with the latest audio-visual technology, accommodating up to 400 people. It also houses a restaurant and café catering to both employees and visitors, over 680 parking spaces, 138 electric vehicle charging stations, and a dedicated bike storage facility.

New Work focus at Škoda Auto's headquarters

With the Laurin & Klement Kampus, the Czech carmaker is introducing contemporary New Work office concepts, tailored to the demands of a modern workforce. The campus is divided into various zones, each designed with a wide range of needs and activities in mind and supported by cutting-edge technology. A key aspect of this modern work environment is desk sharing over 22,800 m² of net office space, allowing employees to use flexible workspaces within their respective areas.

In addition to conventional office zones, the building features designated community areas, designed to encourage networking, social interactions, discussions, and relaxation. Employees will have access to a comprehensive range of facilities aimed at improving employee well-being, fostering creativity, and enhancing motivation, thus contributing to the company's success.

Key factor: sustainability

The new building is expected to receive a gold certificate from the German Sustainable Building Council. This certification is internationally recognised, setting a global benchmark for sustainable construction practices. It ensures the building meets clearly defined standards of sustainability while allowing for international comparability.

The building is equipped with a 222-panel photovoltaic system, boasting a peak power of 100 kW. It also incorporates technical innovations that will significantly reduce energy consumption. For example, LED technology, alongside smart light sensors, reduces power usage by half compared to conventional fluorescent lighting. Additionally, the building features highly efficient ventilation systems that cool the premises overnight and an air conditioning system with an 80% energy recovery rate. Rolling shutters, which shield the complex from sunlight, further enhance efficiency and reduce the building's cooling load by 30%.

Contact

Tomáš Kotera

Head of Corporate and
Internal Communications

+420 326 811 773

tomas.kotera@skoda-auto.cz

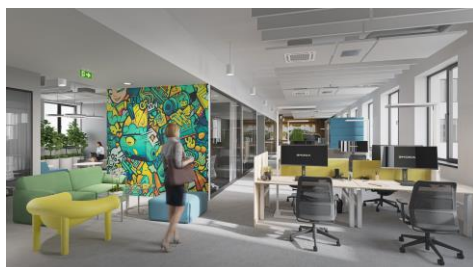
Kateřina Boukalová

Spokesperson for the Kvasiny and
Vrchlabí plants

+420 734 299 812

katerina.boukalova@skoda-auto.cz

Media images



Construction of Škoda Auto's new headquarters completed

The building facilitates New Work concepts and will foster employee networking.

Source: Škoda Auto



Construction of Škoda Auto's new head office completed

The state-of-the-art facility accommodates up to 2,000 employees, consolidating previously dispersed departments

Source: Škoda Auto

Škoda Auto

- › is successfully steering through the new decade with the Next Level – Škoda Strategy 2030.
- › aims to be one of the five best-selling brands in Europe by 2030 with an attractive line-up in the entry-level segments and additional e-models.
- › effectively leverages existing potential in important growth markets such as India, North Africa, Vietnam and the ASEAN region.
- › currently offers its customers eleven passenger-car series: the Fabia, Scala, Octavia and Superb as well as the Kamiq, Karoq, Kodiaq, Enyaq, Enyaq Coupé, Slavia and Kushaq.
- › delivered over 866,000 vehicles to customers around the world in 2023.
- › has been a member of the Volkswagen Group for 30 years. The Volkswagen Group is one of the most successful vehicle manufacturers in the world.
- › independently manufactures and develops components such as MEB battery systems, engines and transmissions as part of the Volkswagen Group; these components are also used in vehicles of other Group brands.
- › operates at three sites in the Czech Republic; has additional production capacity in China, Slovakia and India primarily through Group partnerships, as well as in Ukraine with a local partner.
- › employs over 40,000 people globally and is active in around 100 markets.